

最初に ExPlain 3.0 に入ると Wizard mode が開きます。半全自動解析に対応しておりますが、より細かなパラメータセッティングができる点で、Tool mode のご使用を推奨しています。赤枠の部分で、両 mode が切り替え可能です。

ExPlain

Tool mode • Wizard mode

ウェブ版完全マニュアル

Help

ExPlain™: Gene Expression Analysis System:

- Analysis of microarray, proteomics, ChIP-seq/ChIP-chip data.
- Promoter analysis and identification of transcription factors acting together to affect gene expression.
- Identification of key regulators — potential therapeutic targets.
- Biomarker analysis.

kunita\_san  
[Logout]

ExPlain™

Mammalian Module 3.0

Quick Start Guide

Wizard mode

Data loading → Workflows → Results

Gene set  
Load a gene set, pure list or a table with expression values assigned.

Full expression data with calculated Fold-Change  
Load a full gene expression data file for one comparative study with pre-computed fold changes and p-values. Sets of up-, down- and non-changed genes will be automatically created.

簡易マニュアルのダウンロード

Tool mode の初期画面 (最初に使用する場合は、必要ファイルを弊社のサーバーから、お客様の領域に import してください)

Explain™: Gene Expression Analysis System:

- Analysis of microarray, proteomics, ChIP-seq/ChIP-chip data.
- Promoter analysis and identification of transcription factors acting together to affect gene expression.
- Identification of key regulators — potential therapeutic targets.
- Biomarker analysis.

[Quick Start Guide](#)

[Explain introductory video](#)

**Workflow [Help]**

Use workflow mode to quickly analyze your data set.

- ▶ Switch to workflow mode

**Predefined data sets**

ExPlain provides a number of predefined gene sets, such as Human, Mouse, and Rat promoters and housekeeping genes, as well as one human sample gene set. Some of them are loaded automatically, others can be imported on demand.

File メニューの import を選択してください。

The screenshot shows the ExPlain software interface. The 'File' menu is open, and the 'Import data...' option is highlighted with a red rectangle. The interface includes a menu bar (File, View, Data, Analyze, Help), a toolbar, and a main workspace. The workspace contains the ExPlain logo, a silhouette of a human and two mice, and the text 'Mammalian Module 3.0'. A status bar at the top right indicates 'No running process' and 'Ready: Visualize (+ 3 more) [Advanced]'. A 'Predefined data sets' section is visible at the bottom right, describing predefined gene sets like Human, Mouse, and Rat promoters.

ExPlain™: Gene Expression Analysis System:

- Analysis of microarray, proteomics, ChIP-seq/ChIP-chip data.
- Promoter analysis and identification of transcription factors acting together to affect gene expression.
- Identification of key regulators — potential therapeutic targets.
- Biomarker analysis.

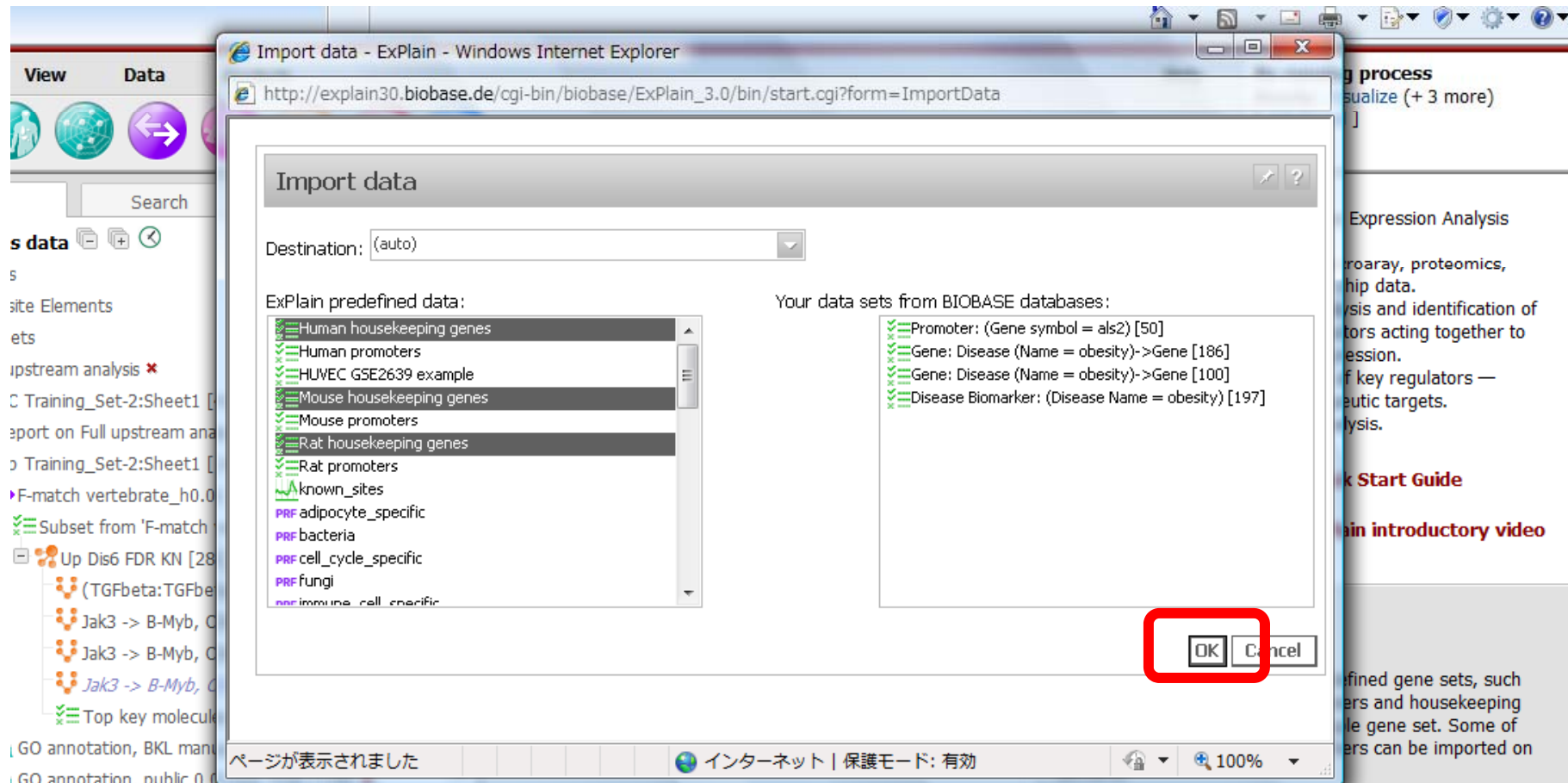
**Quick Start Guide**

**ExPlain introductory video**

**Predefined data sets**

ExPlain provides a number of predefined gene sets, such as Human, Mouse, and Rat promoters and housekeeping genes, as well as one human sample gene set. Some of them are loaded automatically, others can be imported on demand.

コントロールキーで複数のファイルを選択可能です。この例では、human housekeeping genes 等を選択しています。human promoters 等のファイルは、バックグラウンド等に利用可能で、お客様の領域に import しておくことをお勧めします。最後に OK ボタンで、import が行われます。しばらく時間がかかりますが、最初に import しておけば、次回からは必要ありません。



File メニューの 下の方に Go to BKL search engine があります。是非、手動でキュレーションされた高品質データベースも辞書のようにお使いください。ご使用を終了する場合は、一番下の Logout を選択してください。サーバー上では、お客様の開始したプログラム等は、走り続けています。翌日等に結果をご覧になれます。

The screenshot shows the ExPlain web application interface. The left sidebar contains the following menu items:

- Enter/paste accession numbers
- Sequence... (Paste nucleotide sequence)
- Weight matrix... (Make matrix from aligned sequences)
- Load data from file
  - Gene set... (Tab-separated, MS Excel, Affymetrix CHP)
  - Sequences... (FASTA or EMBL format)
  - Interaction sets... (Custom reactions: plain text or Biopax file)
  - CEL-files... (Affymetrix gene-expression arrays)
  - Import data... (Predefined data and BKL search results)
- Organize data
  - New folder... (Create custom folder in the tree)
  - Move item... (Move item with sub-items to another folder)
  - Delete item (Remove item with sub-items (cannot be undone!))
- Integration
  - Go to BKL search engine** (New window will be opened)
  - Export gene sets to BKL... (Export as search result)
  - Logout kunita\_san

The main content area displays the ExPlain™ logo and the Mammalian Module 3.0 logo. Below the logo, there is a list of predefined data sets:

- Explain™: Gene Expression Analysis System:
  - Analysis of microarray, proteomics, ChIP-seq/ChIP-chip data.
  - Promoter analysis and identification of transcription factors acting together to affect gene expression.
  - Identification of key regulators — potential therapeutic targets.
  - Biomarker analysis.
- Quick Start Guide
- ExPlain introductory video

The 'Predefined data sets' section states: "ExPlain provides a number of predefined gene sets, such as Human, Mouse, and Rat promoters and housekeeping genes, as well as one human sample gene set. Some of them are loaded automatically, others can be imported on demand."